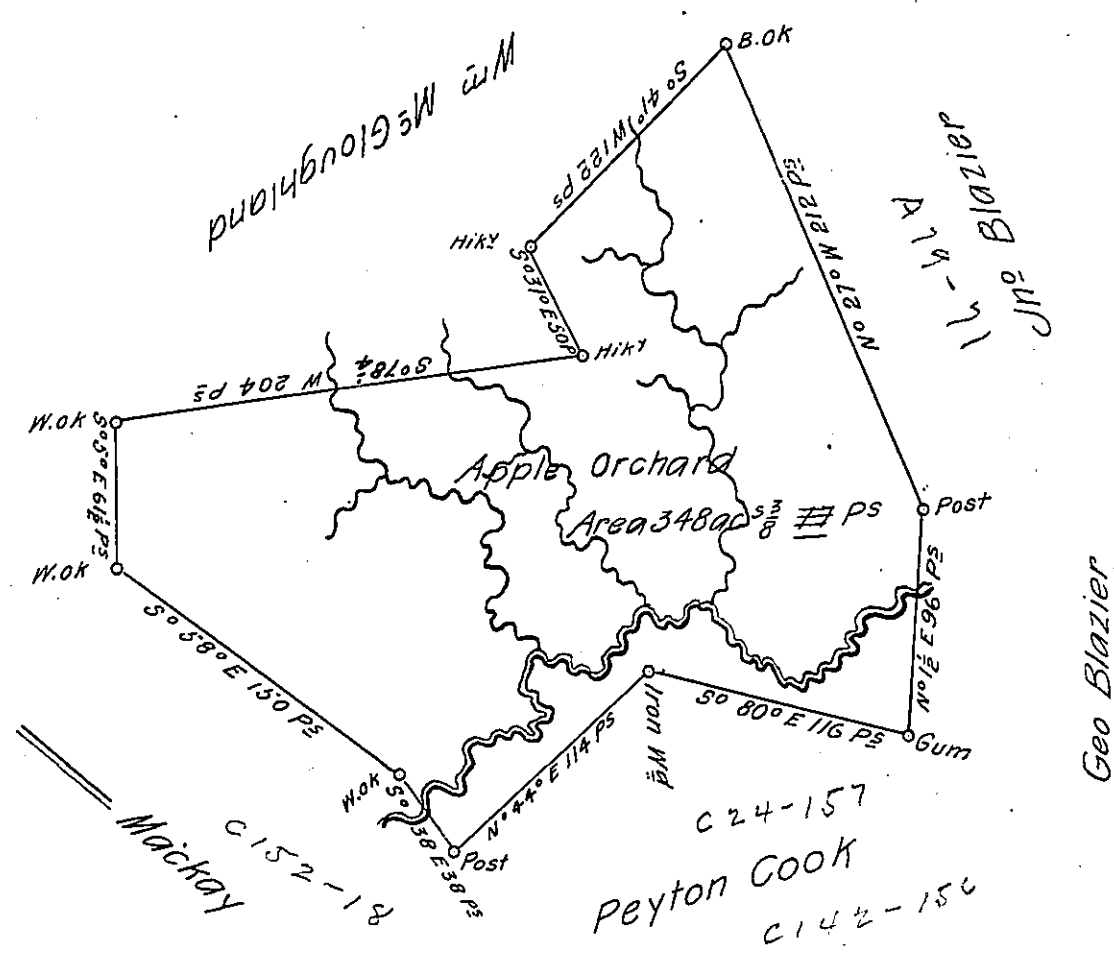


P-8-37  
1/4



A Draught of a Survey called ye "Apple Orchard" situate on the Waters of Kings Cr. in Washington County. cont<sup>d</sup> 348 acs & 7.7 Ps with ye usual allow<sup>ce</sup> executed March the 23<sup>d</sup> 1786 in Pursuance of a Warrant for 300 acs granted to Mary Johnston dated Feby 22<sup>d</sup> 1786.

(126)(56

Presley Nevill }  
 Matt<sup>r</sup>. Ritchie } D.S<sup>e</sup>

Un<sup>o</sup> Lukens Esq<sup>r</sup> S. Gen<sup>l</sup>

IN TESTIMONY that the above is a copy of the original remaining on file in the Department of Internal Affairs of Pennsylvania, made conformably to an Act of Assembly approved the 16th day of February, 1833, I have hereunto set my Hand and caused the Seal of said Department to be affixed at Harrisburg, this seventeenth day of May 1905.

*Geo. B. Blazier*  
 Secretary of Internal Affairs.